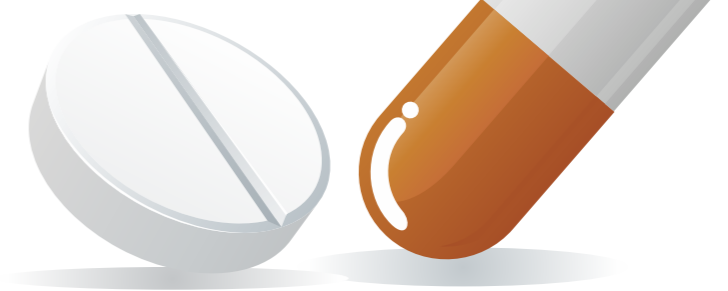




CAMBCAVI

Tablet/Capsule dedusting&conveying



BEIJING C&C CAMBCAVI CO., LTD.

Building G Chuang Ye Yuan, High Science Area Badachu, Shijingshan
District, Beijing, China P.R.China 10041
Tel: 86 10 88795832 / 88792346
Fax: 86 10 88795831
E-mail: cbcv@cambcavi.com
<http://www.cambcavi.com>

C&C200G Uphill Deduster

C&C200G Series Uphill Tablet Deduster is new model with advanced structure. It has achieved double functions of tablet dedusting and elevating. Inlet of the machine can be connected with any model of tablet press, and outlet with metal detector, so that to realize the production line of tablet dedusting, elevating, and detecting. Designed with up-to-date concepts and adopting several advanced technologies, especially suitable for large quantities, large diameter tablets of dust removal and high transmission, the machine is equipped with following characteristics:

Characteristics:

- Body and cover of the machine take building-block design. Height of outlet is easy to adjust.
- The machine working chamber and drive chamber are completely segregated with control chamber, avoided the dust pollute the vibration device and electric control system.
- 360° circle adjustment of inlet and outlet to make production more convenient and save factory room.
- Fast-joint system to ensure safe and quick disassembly and assembly.
- Outstanding efficiency can make mass production of $\Phi 3$ - $\Phi 35$ mm all-kind-shape tablet.
- Parts in contact with medicine all made of 316L tainless steel. No blind spot during whole machine cleaning. Meet cGMP demands.
- New design motor driver to make machine run more smoothly with lower noise.



Safe and fast tablet conveying at high position

C&C
CAMBCAVI



C&C200G3 + Metal Detector Online Application Sketch



Technical Parameter

| Model | C&C200G | C&C200G1 | C&C200G2 | C&C200G3 |
|---------------------------|-----------------------------------|-------------------------|-----------------------|-------------------------|
| Tablet Diameter (mm) | Ø3-Ø35 | | | |
| Max Output Capacity (t/h) | 1800000(Ø6) | | | |
| Inlet height (mm) | 740-940 | 740-940 | 740-940 | 740-940 |
| Outlet height (mm) | 1125-1325 | 1525-1725 | 1925-2125 | 2325-2525 |
| Dedusting Distance (m) | 6.8 | 11.1 | 15.4 | 19.7 |
| Power Supply | 1PH 220V/110V 50Hz/60Hz 0.1kw | | | |
| Compression Air | 0.1 m ³ /min 0.05MPa | | | |
| Vacuum | 2.7 m ³ /min -0.014MPa | | | |
| Dimension (mm) | 577 x 606 x 1362-1562 | 577 x 606 x (1762-1962) | 577 x 606x(2162-2362) | 577 x 606 x (2562-2762) |
| Weight (kg) | 120 | 130 | 140 | 150 |

■ No additional information noted if there are any changed caused by the technical development.

C&C200F Uphill Deduster

Characteristics:

- Body and cover of the machine take building-block design. Height of outlet is easy to adjust.
- The machine working chamber and drive chamber are completely segregated with control chamber, avoided the dust pollute the vibration device and electric control system.
- 360° circle adjustment of inlet and outlet to make production more convenient and save factory room.
- Fast-joint system to ensure safe and quick disassembly and assembly.
- Outstanding efficiency can make mass production of $\Phi 3\text{-}\Phi 25\text{mm}$ all-kind-shape tablet.
- Parts in contact with medicine all made of 316L tainless steel. No blind spot during whole machine cleaning. Meet cGMP demands.
- New design motor driver to make machine run more smoothly with lower noise.



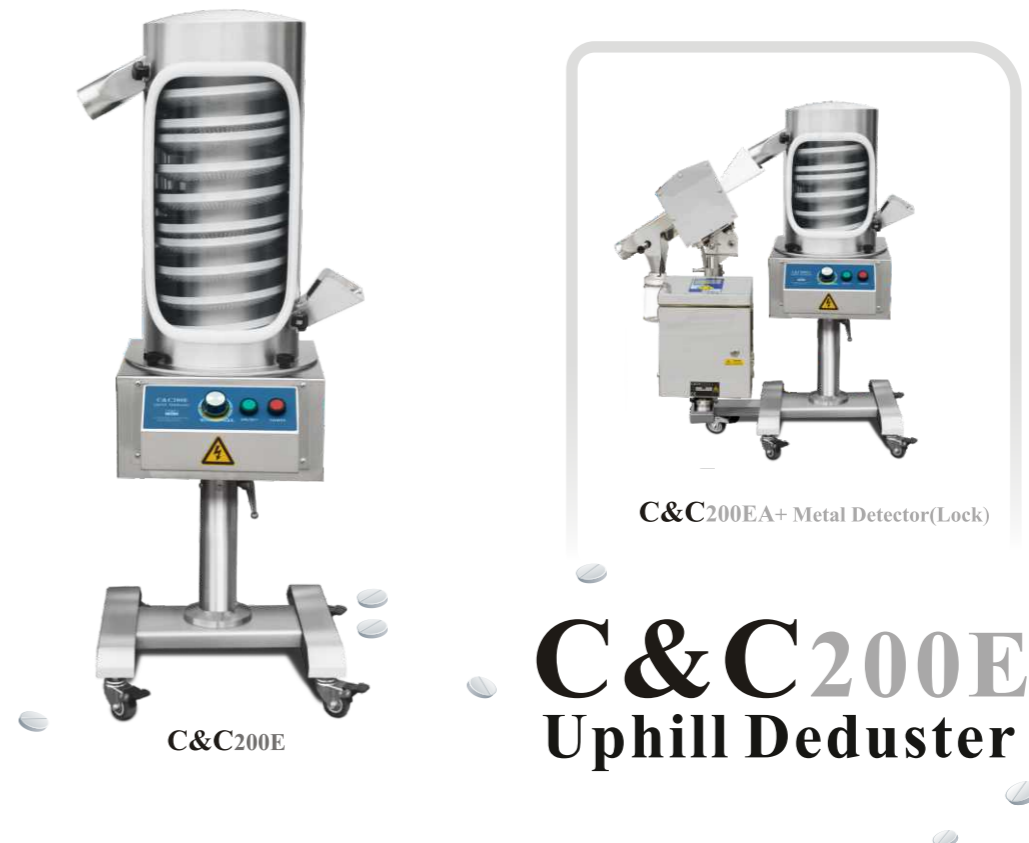
Technical Parameter

| Model | C&C200F | C&C200F+MD | C&C200FA | C&C200FA+MD |
|---------------------------|-----------------------------------|-------------------------|------------------------|--------------------------|
| Tablet Diameter (mm) | Ø3-Ø25 | | | |
| Max Output Capacity (t/h) | 1000000(Ø5) | | | |
| Inlet height (mm) | 825-1005 | | | |
| Outlet height (mm) | 1210-1390 | 920-1100 | 1530-1710 | 1240-1420 |
| Dedusting Distance (m) | 7.5 | | 11.0 | |
| Power Supply | 1PH 220V/110V 50Hz/60 Hz 0.1kw | | | |
| Compression Air | 0.1 m ³ /min 0.05MPa | | | |
| Vacuum | 2.7 m ³ /min -0.014MPa | | | |
| Dimension (mm) | 515x 545 x(1365-1545) | 1020 x 600 x(1365-1545) | 515x 545 x (1712-1892) | 1020 x 600 x (1712-1892) |
| Weight (kg) (kg) | 90 | 140 | 100 | 150 |

■ No additional information noted if there are any changed caused by the technical development.

Characteristics:

- The machine working chamber and drive chamber are completely segregated with control chamber, avoided the dust pollute the vibration device and electric control system.
- Fast-joint system to ensure safe and quick disassembly and assembly.
- Outstanding efficiency can make mass production of $\Phi 3\text{-}\Phi 25\text{mm}$ all-kind-shape tablet.
- Parts in contact with medicine all made of 316L tainless steel. No blind spot during whole machine cleaning. Meet cGMP demands.
- New design motor driver to make machine run more smoothly with lower noise.



Technical Parameter

| Model | C&C200E | C&C200E+MD | C&C200EA | C&C200EA+MD |
|---------------------------|-----------------------------------|--------------------------|------------------------|--------------------------|
| Tablet Diameter (mm) | Ø3-Ø25 | | | |
| Max Output Capacity (t/h) | 1000000(Ø5) | | | |
| Inlet height (mm) | 800-980 | | | |
| Outlet height (mm) | 1085-1265 | 760-940 | 885-1055 | 560-740 |
| Dedusting Distance (m) | 6.0 | | 3.8 | |
| Power Supply | 1PH 220V/110V 50Hz/60Hz 0.1kw | | | |
| Compression Air | 0.1 m ³ /min 0.05MPa | | | |
| Vacuum | 2.7 m ³ /min -0.014MPa | | | |
| Dimension (mm) | 500x 550 x (1280-1460) | 1020 x 600 x (1280-1460) | 500x 550 x (1080-1260) | 1020 x 600 x (1080-1260) |
| Weight (kg) | 70 | 120 | 65 | 115 |

■ No additional information noted if there are any changed caused by the technical development.

C&C100

C&C100 / C&C100A / C&C100C

Capsule Polisher

C&C100C series Capsule Polisher has achieved double functions of capsule polishing and elevating. Inlet of the machine can be connected with any model of capsule filling machine, and outlet with capsule sorter and metal detector, so that to realize the production line of capsule polishing, elevating, sorting and detecting.

Designed with up-to-date concepts and adopting several advanced technologies, the machine is equipped with following characteristics:

Besides, with the advantages of excellent polishing performance, high production efficiency, smart appearance and easy movement, the machine can make production more safe and standard.



C&C100CS



C&C100CD(Lock)

- Double functions of capsule polishing and elevating to leave high flexibility for follow-up equipment line;
- 360° circle adjustment for inlet and outlet to make production more convenient and save factory space;
- Automatically rejection of less dosage, empty, fractured and cap-body separated capsule.
- Fast Dismounting to ensure safe and quick disassembly and assembly;
- Parts in contact with medicine all made of 316L stainless steel or other material conforms to modern medicine safety standards;
- Detachable brush on main shaft can be thoroughly cleaned. No blind spot during whole machine cleaning. Meet cGMP demands.

C&C100CDSA Online Application Sketch



Technical Parameter

| Model | C&C100CS | C&C100CSA | C&C100CS1 | C&C100CSA1 |
|-----------------------------|----------------------------------|------------------|------------------|------------------|
| Capsule Model No. | 00# 0# 1# 2# 3# 4# | | | |
| Max Output Capacity (pcs/h) | 300000 | | 600000 | |
| Inlet height (mm) | 730 | | | |
| Outlet height (mm) | 1100 | 1550 | 1100 | 1550 |
| Power Supply | 1PH 220V/110V 50 Hz/60Hz 0.20kw | | | |
| Compression Air | 0.3m ³ /min 0.3Mpa | | | |
| Vacuum | 3.0 m ³ /min -0.01Mpa | | | |
| Dimension (mm) | 740 x 510 x 1500 | 740 x 510 x 1950 | 740 x 510 x 1500 | 740 x 510 x 1950 |
| Weight (kg) | 80 | 100 | 90 | 110 |

■ No additional information noted if there are any changed caused by the technical development.



Different Combination With Different Functions -just For You

Several advanced technologies and up-to-date concept of designing



Technical Parameter

| Model | C&C100CS | C&C100CSA | C&C100CS1 | C&C100CSA1 |
|-----------------------------|----------------------------------|------------------|------------------|------------------|
| Capsule Model No. | 00# 0# 1# 2# 3# 4# | | | |
| Max Output Capacity (pcs/h) | 300000 | | 600000 | |
| Inlet height (mm) | 730 | | | |
| Outlet height (mm) | 1100 | 1550 | 1100 | 1550 |
| Power Supply | 1PH 220V/110V 50 Hz/60Hz 0.20kw | | | |
| Compression Air | 0.3m ³ /min 0.3Mpa | | | |
| Vacuum | 3.0 m ³ /min -0.01Mpa | | | |
| Dimension (mm) | 740 x 510 x 1500 | 740 x 510 x 1950 | 740 x 510 x 1500 | 740 x 510 x 1950 |
| Weight (kg) | 80 | 100 | 90 | 110 |

■ No additional information noted if there are any changed caused by the technical development.

C&C100-1/C&C100A-1 CAPSULE POLISHER

C&C100 series capsule polishing and sorting machine is an advanced machine with new structure. To compare it with the traditional ones it has apparent advantage for its function and structure. The main characters are:

- Small size, good looking, adjustable height and angles. It can be connected to any types of capsule filling machines. Timely polishing while producing is realized to raise the polishing quality and efficiency.
- It can automatically sort out capsules with low weight, empty body, scrap and loose piece to meet cGMP standard.
- High quality stainless steel is used inside the medicine-polishing chamber. Quick connecting parts are also adopted to dismount the equipment more easily and to clean more thoroughly.
- Quick detachable brush and bearing are used for the main axle. The brush and bearing can be dismounted easily. The hair of brush will not drop.
- A safety device is equipped. The speed of motor is controlled by converter. The polisher can continue to work for long time and stands moment of force.



C&C100



C&C100A-1



Model C&C100-1/C&C100A-1

New function—Main Shaft Blowing:
Blowing air with brush rolling bring
perfect capsule polishing performance
to you.



**CLASSIC MODEL
WITH NEWLY
DESIGN ELEMENTS**



Technical Parameter

| Model | C&C100/ C&C100-1 | C&C100A/ C&C100A-1 | C&C100B |
|-----------------------------|---------------------------------|-------------------------|------------------------|
| Capsule Model No. | 00# 0# 1# 2# 3# 4# | | |
| Max Output Capacity (pcs/h) | 150000 | 300000 | |
| Power Supply | 1PH 220V/110V 50Hz/60Hz 0.2kw | | |
| Compressed Air | 0.25m ³ /min 0.3Mpa | | |
| Vacuum | 2.7m ³ /min -0.01Mpa | | |
| Dimension(mm) | 950 x 600 x (870-1000) | 1150 x 600 x (870-1000) | 500 x 400 x (750-1050) |
| Weight (kg) | 35 | 40 | 15 |

■ No additional information noted if there are any changed caused by the technical development.

C&C100B CAPSULE SORTER



Model C&C100B capsule sorter is used to select out the empty capsules, loose pieces as well as scraps after capsule filling. It can also automatically select out those capsules with lighter dosage. The machine can be connected to the main production line. The capsules can be polished after sorting process which is more suitable for SR capsule dosages.

